

Recess 3" Classic White Downlight



Photograph: Jess Ross Photography (non-transferrable)

Recess 3 inch Classic White Downlight

An elegant solution for a variety of applications. Featuring clean, architectural grade finishes and two high quality white light options, the Recess 3 installs beautifully into all ceiling types, including drywall, stone, and wood and makes every space look its best.

- **Ideal Applications:** Small to Medium-Scaled Spaces
- **Recommended for Ceiling Height:** 8' – 14'
- **Light Type:** Consistent warm or neutral white, soft ambient light

3" DOWNLIGHT PERFORMANCE DATA

Classic White		
Shape	Round	Square
Delivered Lumens:	775	825
Lumens Per Watt:	56	61
Source Lumens:	1600	
Wattage	15W	
CCT:	2700K or 3000K	
CRI:	90+	
Beamspread:	65°	
	Wide Beam / Straight Down	

Round Trims

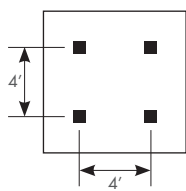


Square Trims



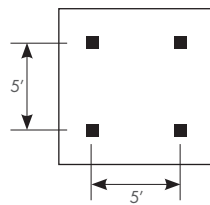
Universal and Field Convertible - Trim | Trimless | Millwork

4' SPACING BETWEEN LIGHT FIXTURES



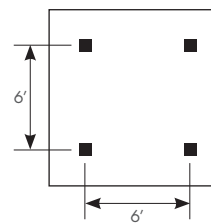
4' x 4' LAYOUT	CEILING HEIGHT			
Light levels at:	8'	10'	12'	14'
Light levels on Work Plane (2.5' AFF):	39	33	29	26
	(fc) foot candles			

5' SPACING BETWEEN LIGHT FIXTURES



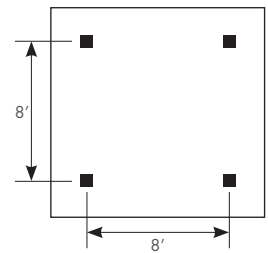
5' x 5' LAYOUT	CEILING HEIGHT			
Light levels at:	8'	10'	12'	14'
Light levels on Work Plane (2.5' AFF):	31	28	25	23
	(fc) foot candles			

6' SPACING BETWEEN LIGHT FIXTURES



6' x 6' LAYOUT	CEILING HEIGHT			
Light levels at:	8'	10'	12'	14'
Light levels on Work Plane (2.5' AFF):	24	23	22	20
	(fc) foot candles			

8' SPACING BETWEEN LIGHT FIXTURES



8' x 8' LAYOUT	CEILING HEIGHT			
Light levels at:	8'	10'	12'	14'
Light levels on Work Plane (2.5' AFF):	15	13	11	10
	(fc) foot candles			

Spacing Criteria = 1.06

Average light levels are provided in the tables above, for a range of lighting fixture layouts and ceiling heights. All illuminance values are reported in average footcandles (fc) and measured at the workplane, 30" above the floor.

For approximate light level recommendations, please refer to the IES guidelines shown below:

Workshop / Tools / Crafts: 40-100 fc
Board Games / Cards: 20-40 fc
Dining: 5-10 fc

Kitchen: 30-50 fc
Computer: 15-30 fc
Media: 2-20 fc

Reading: 20-50 fc
Dressing: 10-30 fc
Corridors / Circulation: 3-5 fc

Recess 3" Classic White Downlight



Seven Easy Steps to Specify

1 Select Housing Type

For Ceilings without Insulation		For Insulated Ceilings
<p>Flat Low Profile Housing (FT) Smallest Available</p>	<p>Retrofit Housing (RT) Installs From Below in Existing Ceiling</p>	<p>Flat Low Profile Housing - (FC) New Construction / IC Rated Housing Rated for Direct Contact with Insulation</p>

2 Select White Light

<p>Warm White (C27)</p> <p>2700 Kelvin Similar to Incandescent</p>	<p>Neutral White (C30)</p> <p>3000 Kelvin Similar to Halogen</p>
---	---

3 Select Dimming Control Type - Smooth Dimming to 1% Standard

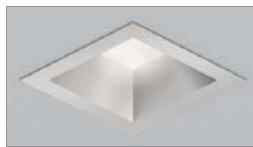
<p>0-10V Low Voltage Dimming (IV15A and RV15A)</p> <p>Compatible with 0-10V Controls</p>	<p>Phased Line Voltage Dimming (IP15A)</p> <p>Compatible with Forward and Reverse Phase Dimmers</p>
---	--

Recess 3" Classic White Downlight

4 Select Shape

Square

Round



5 Select Trim Style For Ceiling Type

Trimmed (F)
for All Ceiling
Types



Trimless (P)
for Sheetrock Ceilings Only
(Must be Spackled In)



Millwork (M)
for Millwork and
Stone Ceilings



6 Select Glass Lens

Solite (S)

provided standard

Light diffusion
with the most
efficiency



Frosted (F)

Medium diffusion
for softer light
output, approximately
12% less light output



7 Select Trim Finish

White (WH)
provided standard



Black (BL)



Statuary
Bronze (BZ)



Metalized
Grey (GR)



Primer (PR)



Clear Matte
Anodized (AC)



Black
Anodized (AB)



See Next Page For
How to Specify

Recess 3" Classic White Downlight



How to Specify

Manufacturer	Light Fixture Type			LED + Control			Options				Revision
USAI	3DL	D1						L			00
USAI	Family	Function	Housing Type	LED Color	Wattage Driver	Shape	Style	Beam Spread	Lens	Finish	Version
USAI Lighting	3DL 3" Downlight, 15W	D1 Fixed Downlight	FT Flat Housing New Construction FC Flat Housing New Construction / IC Rated Housing / Airtight	C27 Warm White 2700K High 90+ CRI C30 Neutral White 3000K High 90+ CRI	IP15A Integral Phase Dimming Driver, to 1% 120V only, 15W RV15A Remote 0-10V Dimming Driver, to 1% 120V-277V, 15W	R Round S Square	F Trimmed P Trimless M Millwork	L 65° Beam	S Solite Textured Glass (provided standard) F Frosted Glass	WH White (provided standard) BL Black BZ Statuary Bronze GR Metalized Grey PR Primer AC Clear Matte Anodized AB Black Anodized	00
			RT Trimmed Only Retrofit from below ceiling	C27 Warm White 2700K High 90+ CRI C30 Neutral White 3000K High 90+ CRI	IP15A Integral Phase Dimming Driver, to 1% 120V only, 15W IV15A Integral 0-10V Dimming Driver, to 1% 120V-277V, 15W	R Round S Square	F Trimmed Only (Retrofit Housing)				

Recess 3" Classic White Downlight

RECESS 3 SPECIFICATIONS

FIELD REPLACEABLE LED LIGHT ENGINE

is serviceable through the aperture without tools. All USAI Lighting Classic White light engines feature industry leading color consistency within a 2-Step MacAdam's ellipse.

FIELD REPLACEABLE DRIVER

Driver complies with IEEE62.41 surge protection. Multiple dimming driver options are available; some on-time delay may be experienced, depending on control system used.

HOUSING:

Fabricated of 20 ga. galvanized steel with thru wire J-box, 4 in 4 out at min. 90°C, #12 AWG thru branch circuit wiring. IC-rated housings for use with 14W light engines only are rated for direct contact with insulation of R-42 or less.

MOUNTING:

Butterfly brackets and adjustable nailer bars with integral nails provided. Nailer bars are extendible from 14" to 24" centers.

CEILING CUT OUT:

Round: 3-1/2" Ø

Square: 3-1/2" x 3-1/2"

LISTINGS:

Dry/Damp. Wet location option available with WH, BL, BZ, GR and PR trims only. NRTL/CSA-US tested to UL standards. IBEW union made.



NOTES:

- Not for use in corrosive environment.
- Use of pressure washer voids warranty.

PHOTOMETRICS:

Consult factory or website for IES files. Tested in accordance with IESNA LM79.