

# Recess 3" Color Select Tunable White Downlight



## Recess 3 inch Color Select Tunable White Downlight

An elegant solution for a variety of applications. Featuring clean, architectural grade finishes and a smooth transition from cool white light to warm, the Recess 3 installs beautifully into all ceiling types, including drywall, stone, and wood and makes every space look its best.

- **Ideal Applications:** Small to Medium-Scaled Spaces
- **Recommended for Ceiling Height:** 8' – 14'
- **Light Type:** Tunable White light from warm candlelight (2200K) to bright daylight (6000K)



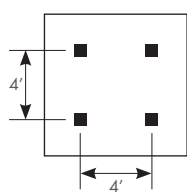
**Universal and Field Convertible -  
Trim | Trimless | Millwork**

### 3" DOWNLIGHT PERFORMANCE DATA

Color Select Tunable White

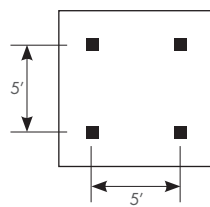
Color Temperature	2200K	2700K	3000K	3500K	4000K	5000K	6000K
Delivered Lumens:	850	900	925	950	975	1025	1050
Lumens Per Watt:	46	47	52	54	55	57	59
Source Lumens:	1100	1175	1200	1250	1300	1350	1375
Wattage	18W						
CCT:	2200K to 6000K						
CRI:	80+						
Beamspread:	50°						
	Wide Beam / Straight Down						

**4' SPACING  
BETWEEN  
LIGHT FIXTURES**



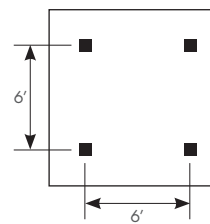
4' x 4' LAYOUT	CEILING HEIGHT			
Light levels at:	8'	10'	12'	14'
Light levels on Work Plane (2.5' AFF):	49	43	39	35
	(fc) foot candles			

**5' SPACING  
BETWEEN  
LIGHT FIXTURES**



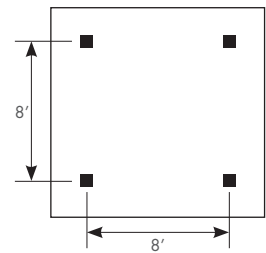
5' x 5' LAYOUT	CEILING HEIGHT			
Light levels at:	8'	10'	12'	14'
Light levels on Work Plane (2.5' AFF):	33	36	33	30
	(fc) foot candles			

**6' SPACING  
BETWEEN  
LIGHT FIXTURES**



6' x 6' LAYOUT	CEILING HEIGHT			
Light levels at:	8'	10'	12'	14'
Light levels on Work Plane (2.5' AFF):	28	28	27	25
	(fc) foot candles			

**8' SPACING  
BETWEEN  
LIGHT FIXTURES**



8' x 8' LAYOUT	CEILING HEIGHT			
Light levels at:	8'	10'	12'	14'
Light levels on Work Plane (2.5' AFF):	20	17	15	13
	(fc) foot candles			

Spacing Criteria = 0.80

Average light levels are provided in the tables above, for a range of lighting fixture layouts and ceiling heights. All illuminance values are reported in average footcandles (fc) and measured at the workplane, 30" above the floor.

**For approximate light level recommendations, please refer to the IES guidelines shown below:**

**Workshop / Tools / Crafts:** 40-100 fc  
**Board Games / Cards:** 20-40 fc  
**Dining:** 5-10 fc

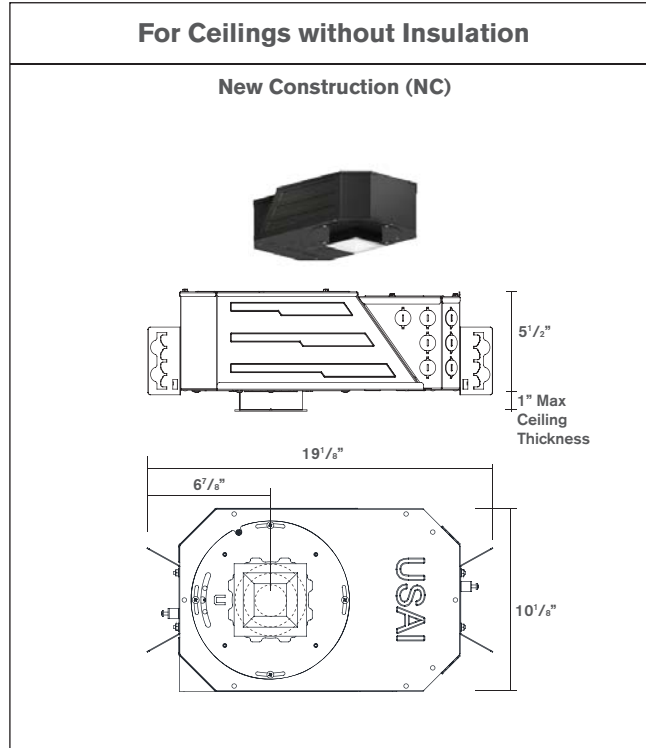
**Kitchen:** 30-50 fc  
**Computer:** 15-30 fc  
**Media:** 2-20 fc

**Reading:** 20-50 fc  
**Dressing:** 10-30 fc  
**Corridors / Circulation:** 3-5 fc

# Recess 3" Color Select Tunable White Downlight

## Five Easy Steps to Specify

### 1 Select Housing Type



### 2 Select Shape

Square



Round



### 3 Select Trim Style For Ceiling Type

**Trimmed (F)**  
for All Ceiling Types



**Trimless (P)**  
for Sheetrock Ceilings Only  
(Must be Spackled In)



**Millwork (M)**  
for Millwork and Stone Ceilings



### 4 Select Glass Lens

**Solite (S)**

provided standard)

Light diffusion with the most efficiency



**Frosted (F)**

Medium diffusion for softer light output, approximately 12% less light output



# Recess 3" Color Select Tunable White Downlight



**5 Select Trim Finish**



**How to Specify**

Manufacturer	Light Fixture Type			LED + Control		Options					Revision
<b>USAI</b>	<b>3DL</b>	<b>D1</b>	<b>NC</b>	<b>TW1</b>	<b>IV18A</b>			<b>I</b>			<b>00</b>
<b>USAI</b>	<b>Family</b>	<b>Function</b>	<b>Housing Type</b>	<b>LED Color</b>	<b>Wattage Driver</b>	<b>Shape</b>	<b>Style</b>	<b>Beam Spread</b>	<b>Lens</b>	<b>Finish</b>	<b>Version</b>
<b>USAI Lighting</b>	<b>3DL</b> 3" Downlight, 18W	<b>D1</b> Fixed Downlight	<b>NC</b> New Construction Housing	<b>TW1</b> Color Select Tunable White from 2200K to 6000K, continuously variable through 0-10V controls by others	<b>IV18A</b> Integral 0-10V Dimming Driver, to 1% 120V-277V, 18W	<b>R</b> Round <b>S</b> Square	<b>F</b> Trimmed <b>P</b> Trimless <b>M</b> Millwork	<b>I</b> 50° Beam	<b>S</b> Solite Textured Glass (provided standard) <b>F</b> Frosted Glass	<b>WH</b> White (provided standard) <b>BL</b> Black <b>BZ</b> Statuary Bronze <b>GR</b> Metalized Grey <b>PR</b> Primer <b>AC</b> Clear Matte Anodized <b>AB</b> Black Anodized	<b>00</b>

# Recess 3" Color Select Tunable White Downlight

## RECESS 3 SPECIFICATIONS

### FIELD REPLACEABLE LED LIGHT ENGINE

is serviceable through the aperture without tools. All USAI Lighting Color Select light engines feature industry leading color consistency.

### FIELD REPLACEABLE DRIVER

Driver complies with IEEE62.41 surge protection. Multiple dimming driver options are available; some on-time delay may be experienced, depending on control system used.

### HOUSING:

Fabricated of 20 ga. galvanized steel with thru wire J-box, 4 in 4 out at min. 90°C, #12 AWG thru branch circuit wiring. IC-rated housings for use with 14W light engines only are rated for direct contact with insulation of R-42 or less.

### MOUNTING:

Butterfly brackets and adjustable nailer bars with integral nails provided. Nailer bars are extendible from 14" to 24" centers.

### CEILING CUT OUT:

Round: 3-1/2" Ø

Square: 3-1/2" x 3-1/2"

### LISTINGS:

Dry/Damp. Wet location option available with WH, BL, BZ, GR and PR trims only. NRTL/CSA-US tested to UL standards. IBEW union made.



### NOTES:

- Not for use in corrosive environment.
- Use of pressure washer voids warranty.

### PHOTOMETRICS:

Consult factory or website for IES files. Tested in accordance with IESNA LM79.